

# Welcome Parents!



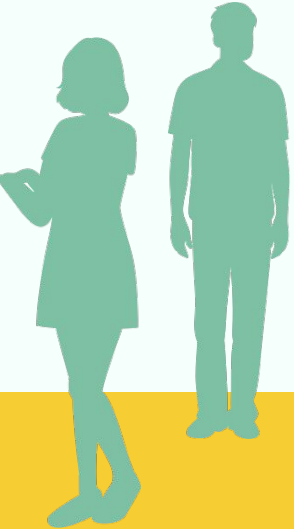


## School day 8am-3:15pm

- Drop off in gym lot 7:30-7:55am
- Pick up in gym lot
- If tardy or leaving early, ring bell at front door



## Safe at Ashe County Schools



- Cameras to monitor activities
- Doors locked
- Monthly drills (fire, tornado, lockdown)
- SRO on site daily
  - Fully sworn Law Enforcement Officer with full powers of arrest
- Plans and strategies to prevent and/or minimize dangerous situations on or near the campus or involving students at school related activities
- GoGuardian, Gaggle, Say Something

**Transparent  
water  
bottles  
containing  
water**



## **ELECTRONICS**

- Cell Phone/Apple watch/iPods: to be powered off and out of sight
- Students should not text or call from their phone during school hours (Office phones available for calls)

# ATTENDANCE

- ❖ Crucial that students regularly attend school
  - Difficult to learn if not in class
- ❖ Please remember to **write notes** when students are absent for excused reasons
  - (only 3 days to turn these in)
- ❖ **Bring doctor/dentist notes whenever possible**
- ❖ Parents mailed letters at 3-6-10 absences



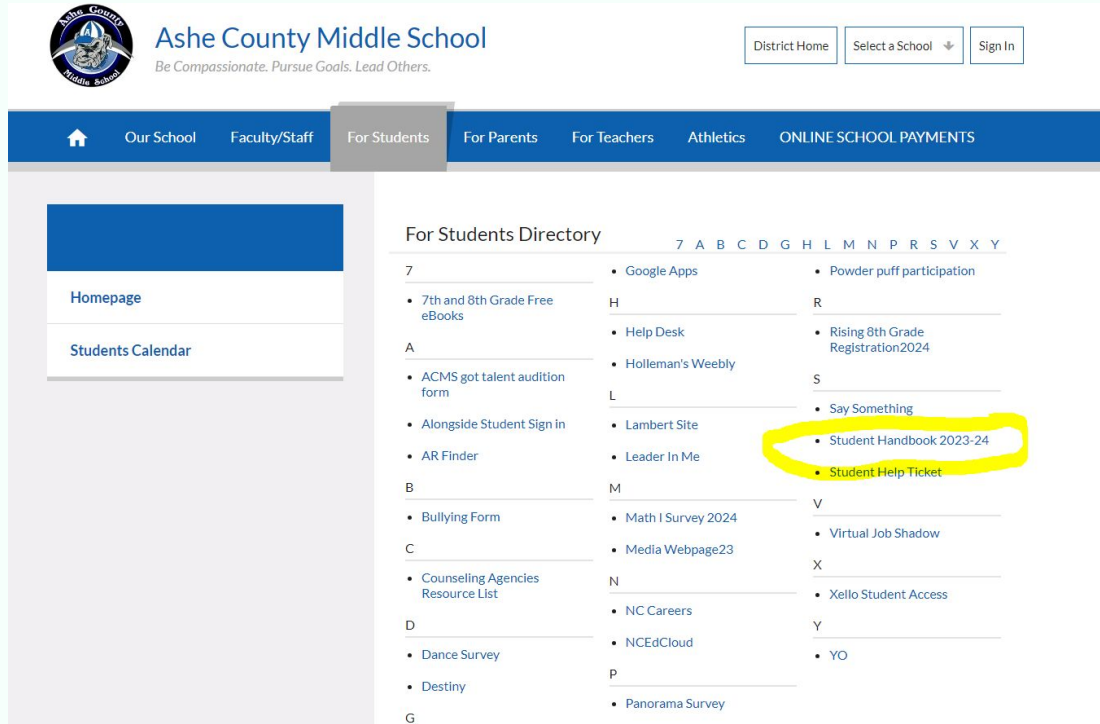
A student is considered chronically absent if they've missed 10% of school days!

# SCHOOL RULES / POLICIES

All school rules/policies and consequences will be covered in your child's **Student Handbook** which can be accessed on our website under the

"For Students" tab

\*Please review the handbook with your child



The screenshot shows the Ashe County Middle School website. The header includes the school logo, name, and tagline "Be Compassionate. Pursue Goals. Lead Others." along with links for "District Home", "Select a School", and "Sign In". The navigation bar features tabs for "Our School", "Faculty/Staff", "For Students" (which is highlighted), "For Parents", "For Teachers", "Athletics", and "ONLINE SCHOOL PAYMENTS". On the left side, under the "For Students" tab, there are links for "Homepage" and "Students Calendar". The main content area displays the "For Students Directory" with a grid of links organized by letter. The "S" section is highlighted in yellow, and the link "Student Handbook 2023-24" is circled in yellow.

Ashe County Middle School  
Be Compassionate. Pursue Goals. Lead Others.

District Home Select a School Sign In

Our School Faculty/Staff For Students For Parents For Teachers Athletics ONLINE SCHOOL PAYMENTS

Homepage  
Students Calendar

For Students Directory

7 A B C D G H L M N P R S V X Y

7

- Google Apps
- Powder puff participation

7th and 8th Grade Free eBooks

H

- Help Desk
- Rising 8th Grade Registration2024

A

- ACMS got talent audition form
- Holleman's Weebly
- S

Alongside Student Sign in

L

- Say Something
- Student Handbook 2023-24
- Student Help Ticket

AR Finder

Lambert Site

Leader In Me

B

M

- Math I Survey 2024
- Virtual Job Shadow

Bullying Form

N

- Xello Student Access

C

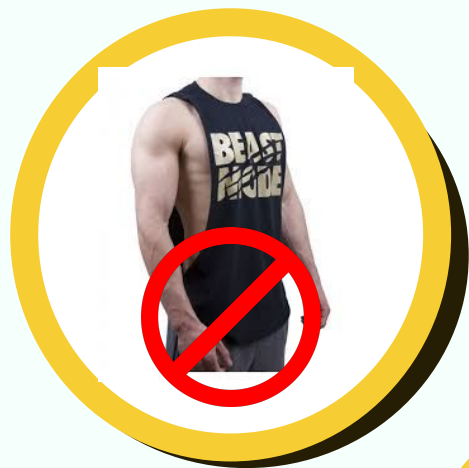
- Counseling Agencies Resource List
- NC Careers
- NCEdCloud
- YO

D

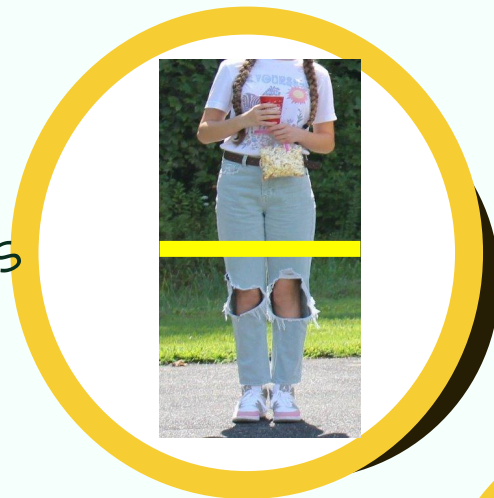
- Dance Survey
- Panorama Survey

Destiny

P



Fingertips



**DRESS CODE**

## Working lunch

- Catch up on assignments
- Minor infractions

## ASD

- Assigned:
  - when a student has made a moderate infraction
  - for multiple zeroes in classes
- 3:15-4:15pm on Tuesdays & Thursdays
- Parent notified
- Pick student up at front entrance

## ISS

- Occurs when student has exhausted interventions with the team and has received a referral to the office
- All class work is completed and turned in to the team
- Parents are notified
- Documented in discipline file in Infinite Campus

## Teen Court

- Truancy
- More serious infractions

## OSS

- Occurs when student commits an infraction that is deemed more severe, or is a continuation/repetition of minor infractions
- Referral to office
- Parent notified
- Documented in discipline file in Infinite Campus



# SOCIALS

Every 4 ½ weeks

Fresh start after each social

**No  
debt**

**Less than 3  
unexcused  
absences**

**No  
ISS/OSS  
/Bus  
referral**

**Passing  
all  
classes**

*fun &  
games*



**ZHOT.**

AFTERSCHOOL



ASHE COUNTY SCHOOLS

# After School Program

Monday - Friday  
till 6:15pm



REGISTRATION FOR  
MIDDLE SCHOOL IS  
NOW  
**OPEN**

GRANT FUNDED  
**ZERO  
COST**  
FOR  
EVERYONE

Open from  
dismissal to 6:15 pm  
and scheduled early  
release days!

**WHAT WE PROVIDE:**

- Tutoring
- Enrichment program
- Clubs
- Afternoon snack
- Transportation

Applications online in English & Español  
For more information contact Molly Porter  
molly.dawes@ashe.k12.nc.us  
(336)246-7175 (EXT.1014)



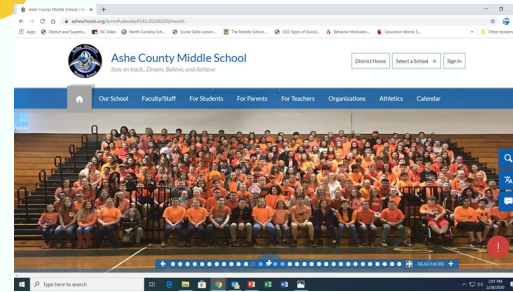


# Communication is key

Crucial that student info is  
correct



**CONNECT 5**



We want to be your partner





# ACMS Parent Orientation Night



**Welcome to the Middle School!**

# Office Personnel



Mrs. Calhoun  
Receptionist



Mrs. Miller  
School Secretary

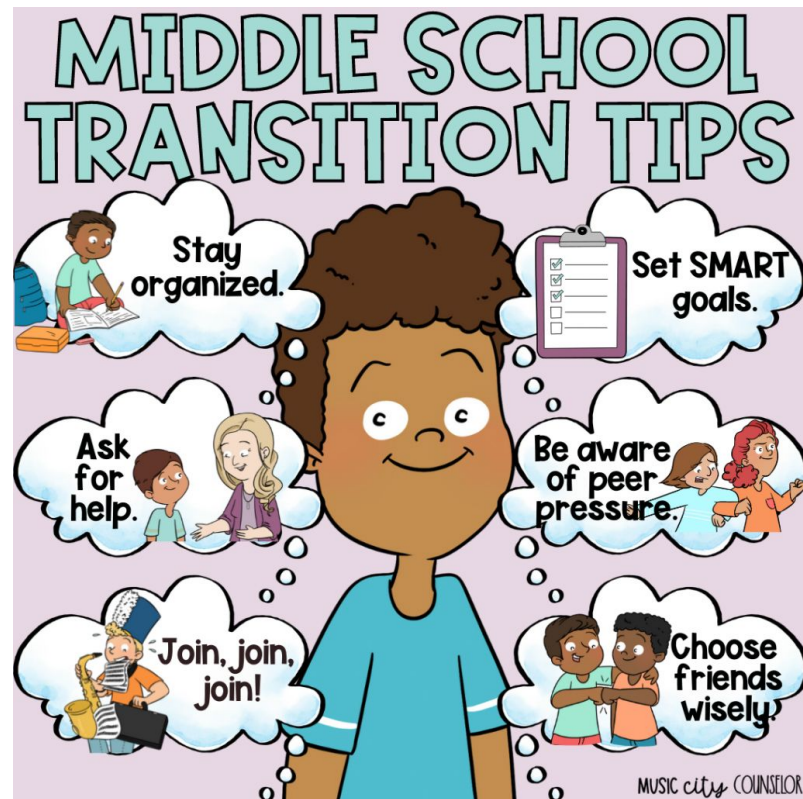


Ms. Hart  
Data Manager



# What Is a Middle School?

Middle school is a time of transition. Our goal here at ACMS is to help students acquire the skills to be responsible citizens, while providing them with a supportive environment.





# Teaming

- ❖ A team is the group of teachers responsible for your student's core classes (ELA, Math, Science, SS). We meet and work together to meet the needs of your student.
- ❖ Your child will be placed on one of the following seventh grade teams:
  - **Dragons, Pegasus, Thunderbirds**



# Encore/Career and Technical Education (CTE)

- ❖ Art
- ❖ Music Appreciation
- ❖ Project Lead the Way: Design & Modeling
- ❖ Exploring Food & Agricultural Products
- ❖ Exploring Personal Characteristics & Careers
- ❖ Health/P.E. (one semester-required/will need tennis shoes)
- ❖ Band (year long)
- ❖ Reading Plus/Math Squared (intervention classes placed by MTSS team)



# Exceptional Children at ACMS

## **AIG in Reading**

- Students are cluster grouped with 5-7 other AIG students in a heterogeneous ELA class with an AIG certified teacher.
- Students will receive additional service time during our Climb Time.

## **AIG in Math/Advanced Math**

- Advanced Math is not contingent upon AIG placement.
- A student who makes a 5 on the Math EOG will be enrolled in an advanced math course. This doesn't automatically identify a student as AIG, nor does it hinder students that aren't identified as AIG from taking advanced math courses.

# Exceptional Children at ACMS

**If your child has an Individualized Education Plan (IEP) and you have questions, please see Alecia Giles or Holly McClure after the meeting.**

**Mrs. Alecia Giles - [alecia.giles@ashe.k12.nc.us](mailto:alecia.giles@ashe.k12.nc.us)**  
**Mrs. Holly McClure - [holly.s.mcclure@ashe.k12.nc.us](mailto:holly.s.mcclure@ashe.k12.nc.us)**

# Additional Blocks

## PAWS Time (20 mins):

- Students meet in small groups each morning for homeroom
- Attendance and daily check-in to start the day. All paperwork and notes should be sent to PAWS teacher.
- Focus on **Leader in Me** lessons (leadership, responsibility, goal-setting), SEL lessons, and Xello

## Climb Time (30 mins):

- Students receive targeted interventions or enrichment activities in reading and/or math
- Focuses on strengthening foundational skills or challenging advanced learners
- Students rotate weekly based on needs

# CLUBS

- Battle of the Books
- Junior Beta (new)
- Math Counts
- Odyssey of the Mind (Afterschool)

\*Additional clubs and activities may be added throughout the year.

# ACMS Athletics



Boys Fall Sports	Girls Fall Sports
Football (Youth League Football)	Football Cheerleading
Soccer	Golf (co-ed)
Golf (co-ed)	Volleyball
Boys Winter Sports	Girls Winter Sports
Basketball	Basketball
Wrestling	Basketball Cheerleading
Boys Spring Sports	Girls Spring Sports
Baseball	Softball
Track	Track
	Soccer

# Athletic Eligibility

All 7th grade students must meet the following criteria to be eligible:

1. Students must pass 70% of previous semester courses.
2. The student must have attended at least 85 percent of the total number of instructional days in the previous semester.
3. Students must have a current sports physical, concussion statement and EKG to tryout. Sports physicals are good for 395 days.
4. Heart of a Husky will be **May 16th** and is a great opportunity to complete all physical/EKG requirements. Registration opens up May 1st.
5. Signed parent or guardian permission.



# Athletic Team Selection



- All interested students will receive a tryout.
- Coaches will evaluate players based on skill level, attitude, and other factors.
- Players will be told discreetly of their team selection status.
- There are no participation fees for middle school athletics.

Email: [mitchell.mash@ashe.k12.nc.us](mailto:mitchell.mash@ashe.k12.nc.us) with any questions.





# Information about the Topdog Clinic



## Staff:

- Family Nurse Practitioner  
(Available 3 days per week)
- 1 Registered Nurse
- Office Assistant
- Licensed Clinical Mental Health Counselor  
(Available M-F)

## Who can use the clinic?

- Any student enrolled at ACMS may use the clinic **IF and ONLY IF** clinic enrollment forms have been filled out completely and are signed by a parent or legal guardian.
- **Please note:** The clinic does not replace your current primary care provider. We only see your child while they are at school. If you enroll your child in the clinic this **does NOT** mean you are changing doctors.

# Important Information for the school year:

## All 7<sup>th</sup> grade students:

- Must have at least one dose of the Tdap and Menquadfi vaccine, this is effective July 1, 2015.
- Your child can receive these vaccines at the clinic. Other optional vaccines that can be given at the clinic include Hepatitis A, HPV, and flu.

## Insurance:

- Beginning August 1, 2015, the clinic began following Appalachian District Health Department policy for billing ALL insurances. This is in an effort to keep the clinic open and functioning for future students.
- If your child does not have insurance, stop by the clinic and talk to a staff member. We will NOT refuse services to your child if you are unable to pay.

# SCHOOL CASH ONLINE

We are very pleased to announce the launch of SchoolCash Online, an online payment system that allows parents to pay for student fees, field trips, etc. We would like to invite our parents to go ahead and create an account. You will be notified by the system or your child's school when payments are active.

To create a SchoolCash Online account, there are two steps:

- 1) Create a free SchoolCash Online account
- 2) Attach their student(s) to their profile

There are two ways for parents to create an account:

- Our SchoolCash system sends an invitation email to PRIMARY GUARDIANS ONLY, who can click a link sent to start the registration process and attach their student(s) to their profile. This only works if you are named the primary guardian(s) in PowerSchool!
- Any parent can create an account by visiting our [SCHOOL'S SchoolCash Online page](#).

When this process is complete, parents who have attached a student(s) to their profile will receive an automated notification anytime a new fee becomes available related to your student(s).

There is a minimal fee for using the SchoolCash Online payment method.

**\*\*Remember this is a separate payment system from Titan (the cafeteria account system) and Josten's (Yearbook).**

If you would like more information on School Cash Online, please visit the following [link](#).



## School Fees:

General fees \$25.00  
Chromebook fee \$30.00

Total: \$55.00




# How We Will Support You

- School policies will be enforced.
- Grades will be updated weekly on Thursdays.
- Teachers will communicate through Remind, e-mail, and by phone.
- Teachers will contact you with any concerns they have.
- We will support your child as they take responsibility for their own learning.

# How You Can Support Your Student

- Be aware of the school policies. Your student is required to follow them, and the teachers are required to enforce them.
- Contact your student's teachers with any concerns.
- School supplies should be bought after you have been notified by your team teachers. Ashe Blast is tentatively scheduled for Aug. 9th. Supplies will be available.
- Check their progress online via Infinite Campus and Canvas
- We use Socials to hold students accountable for grades, absences, behavior, and debts. Please partner with us to make sure they are meeting the requirements to attend.

# WHY READ 20 MINUTES AT HOME?

Student A Reads	Student B Reads	Student C Reads
❖ 20 minutes per day.	❖ 5 minutes per day.	❖ 1 minute per day
❖ 3,600 minutes per school year.	❖ 900 minutes per school year.	❖ 180 minutes per school year.
❖ 1,800,000 words per year.	❖ 282,000 words per year.	❖ 8,000 words per year.
		
❖ Scores in the 90 <sup>th</sup> percentile on standardized tests.	❖ Scores in the 50 <sup>th</sup> percentile on standardized tests.	❖ Scores in the 10 <sup>th</sup> percentile on standardized tests.
If they start reading for 20 minutes per night in Kindergarten, by the end of 6 <sup>th</sup> grade, Student A will have read for the equivalent of 60 school days, Student B will have read for 12 school days, and Student C will have read for 3.		
<b>WANT TO BE A BETTER READER? SIMPLY READ.</b>		

(Gray and Brown, 1982.)

Please reinforce the daily habit of at least 20 minutes of independent reading!

See your elementary librarian for an ASU summer reading log.


# NCEdCloud

Inbox - danny.eldreth@ x My Drive - Google Drive x Parent Orientation Night x Directory x RapidIdentity x

Secure | https://idp.ncedcloud.org/idp/AuthnEngine#/authn

Apps Home - SUDDS The Complete Works Ready Teacher Toolbc The Hand Classic Poems About William Wordsworth Short Stories About S Planbook.com - Onlin Microsoft Word - Por 35 Bible verses about »

## RapidIdentity



Login

Do NOT bookmark this page. [Need help?](#)

NCEdCloud

Username


Password

Go

Don't have an account yet? [Claim your account.](#)

Claim My Account

Powered by



**This is the portal for students. All you need is your child's Username and Password, and you can access his/her grades whenever you want! :) Using this method is the easiest route.**

Windows taskbar: 12:49 PM 4/25/2018

# Infinite Campus

Grades	
Language Arts/Grade 6	
1st Semester	99 (99.03%) In-progress
Current Progress	99 (99.03%)
Mathematics/Grade 6	
1st Semester	98 (98.4%) In-progress
Current Progress	98 (98.4%)
<a href="#">Middle School Updates_06*</a>	

Access student grades

Review attendance and absences

See assignment due dates and missing assignments

Check weekly on Fridays

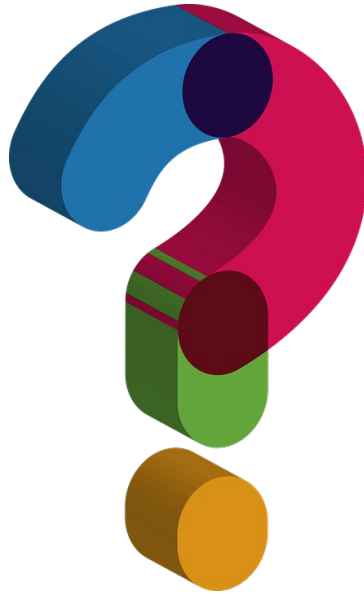


# Expectations shared with 6th graders

- Respect yourself.
- Respect others.
- Help each other become responsible members of society.
- Come to school with an “I can” attitude.
- Challenge yourself to do things you have not attempted before.
- Do your best.
- Have Fun !!!



# What Questions Do You Have?



The background features a vertical color gradient from light orange at the top to light blue at the bottom. A large, faint circular graphic is centered, composed of two concentric white circles and eight radial lines extending from the outer circle to the inner one.

# SCHOOL COUNSELING

Ashe County Middle School

Bernedette Thompson, 7th grade



*Remind*



**THIS IS US**



**2025-26**

Kristy Aldridge, 8th grade

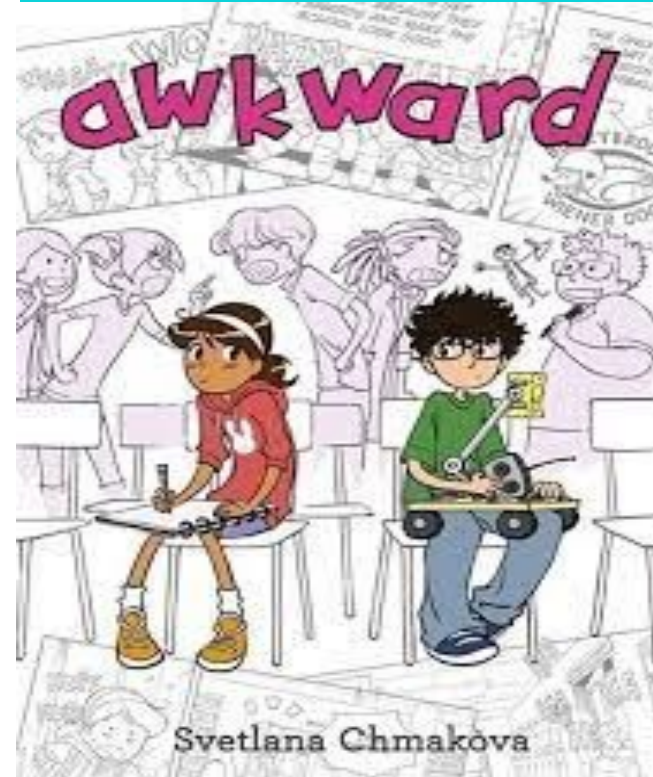
## ❖ Emotional ups and downs

- Typical teens come with ups and downs, as well as moodiness.
- Teens feel things intensely. Ex: she is *never* nice to me or he *always* makes fun of me.

## ❖ Tend to **focus on “I”**

## ❖ May be a little **awkward or clumsy**

- Their brains need time to adjust to longer limbs, bigger bodies, and changes in hormones.
- Bodies work hard - need to bathe and wear deodorant!



# Middle School Transition WORRIES



# How can we help students?

- Classroom lessons
- Individual Counseling (strategies, problem solving)
  - 504 Plans
  - Referrals to other agencies
- Student Academic & Emotional Support
  - Attendance support
  - Registration & goal setting
  - College and Career Readiness











Please let us know if personal matters might affect your child's school day.

# How can we help you?

- **School support** (academic, attendance, behavior...)
- **Needs** (food, clothes, shoes, ...)
- **Social emotional learning** (SEL supports & interventions)
- **Transition, registration, ....**
- **Informational handouts & websites** (see our webpage)
- **Referrals** to other agencies
- **Communication** (Remind: @acmssch)



# Social Emotional Learning (SEL)

Improves academic achievement 	SEL skills are life skills 	SEL skills improve class performance 
Builds strong decision-makers 	<b>Why SEL Belongs in Schools</b> <a href="http://www.thepathway2success.com">www.thepathway2success.com</a>	
Improves behavior in the classroom 	SEL skills teach academic and study skills 	Builds confident learners 
Builds a strong classroom community 	SEL can be integrated into content 	SEL can help partner with families 

SEL is the process through which all young people and adults acquire and apply the **knowledge, skills, and attitudes** to:

- develop healthy identities,
- manage emotions and achieve personal and collective goals,
- feel and show empathy for others,
- establish and maintain supportive relationships, and
- make responsible and caring decisions.

# The Middle School Brain

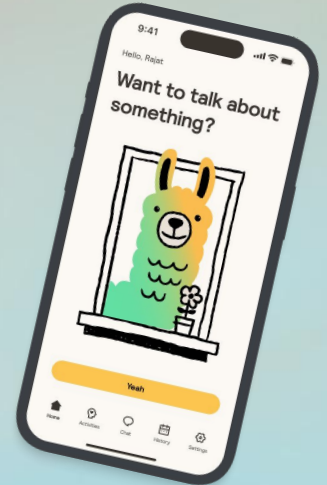
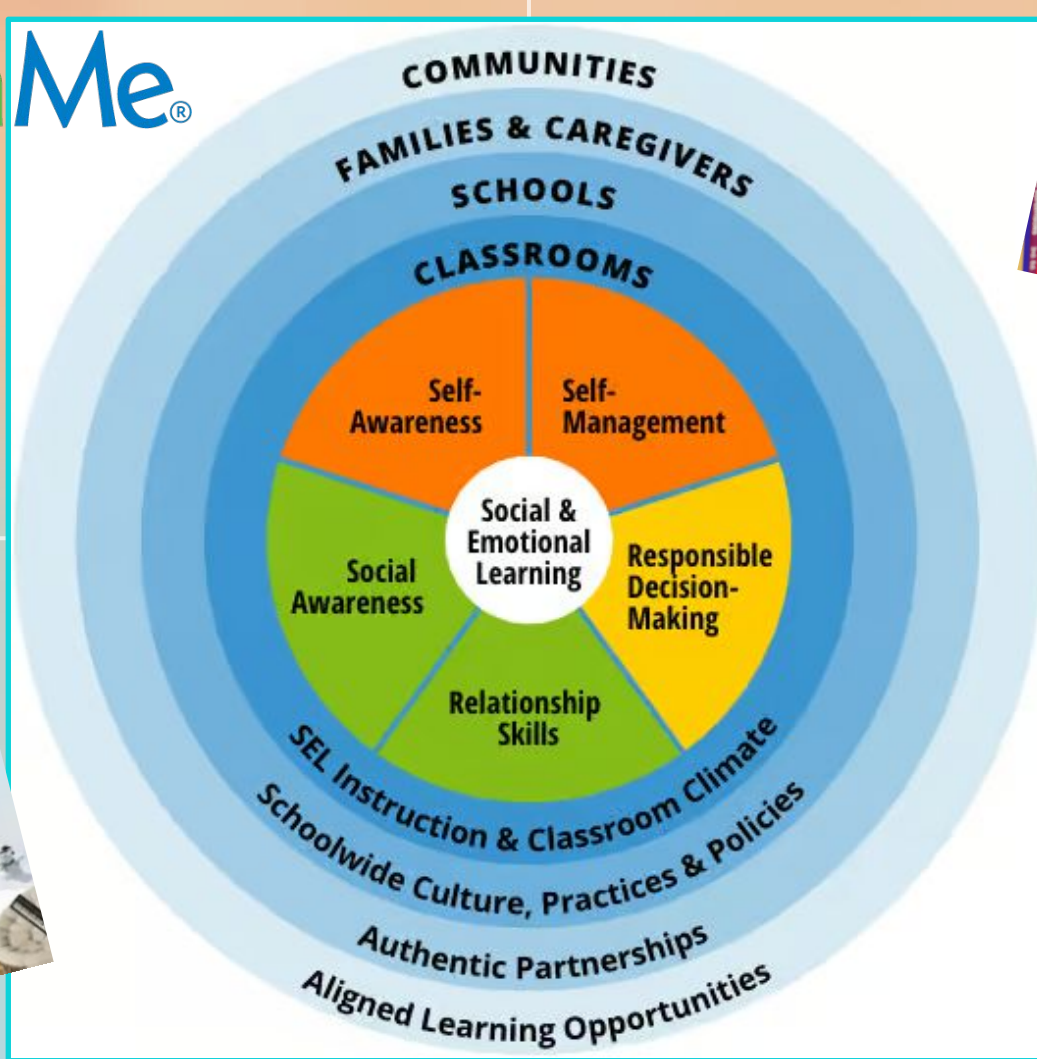
**Middle school minds are truly a work in progress. The prefrontal cortex, or the part of the brain used for rational decisions, is**  
*still developing.*

**While adolescents are still growing and developing, learning social-emotional skills can help empower them to make**  
*better choices along the way.*



Clipart by  
Whimsy  
Workshop  
Teaching

[www.thepathway2success.com](http://www.thepathway2success.com)

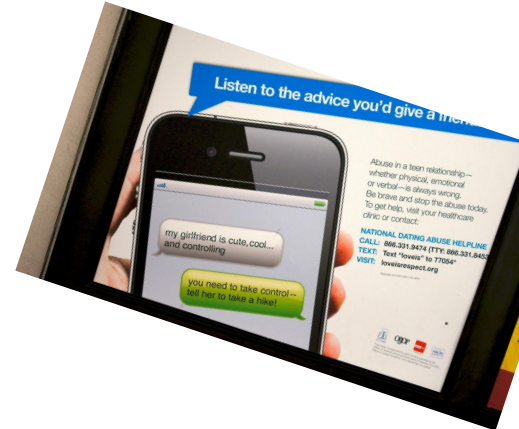


# Bullying

Unwanted, aggressive behavior that involves a real or perceived power imbalance. The behavior is repeated, or has the potential to be repeated, over time.

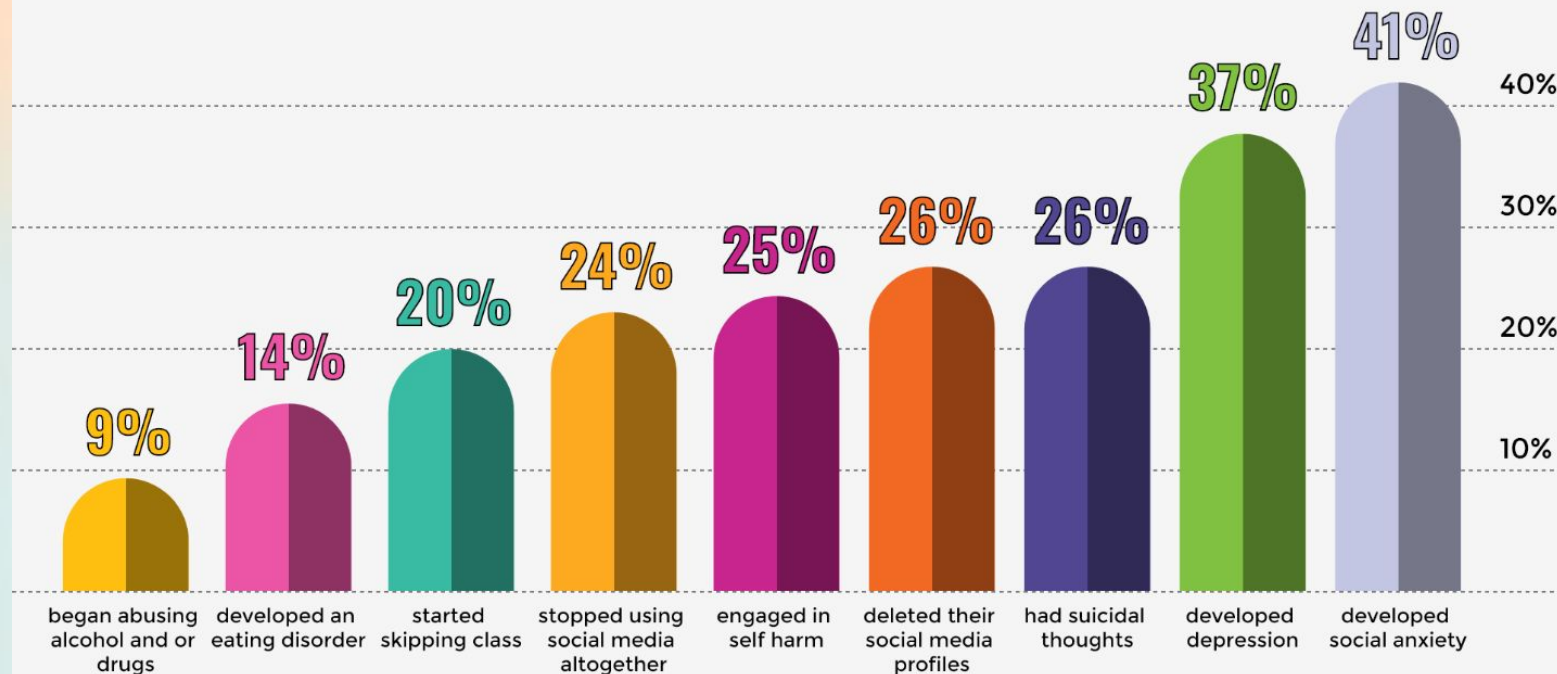
This behavior can manifest itself:

- Verbally
- Physically
- Socially
- Electronically (cyberbullying)



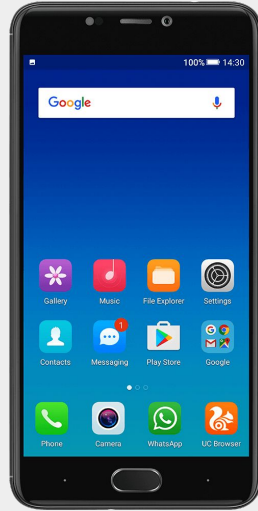


# Issues Kids Feel Result From Cyberbullying



Effect of Cyberbullying

**Be Informed and Involved!**



**Phones  
&  
Social  
Media**

# Phones & online safety

- 60% of 11 year olds interviewed stated that their parents should not have let them see things they have seen...
- U.S. children are the largest viewers of internet pornography... more than the entire country of India. (This is now considered a national health crisis)
- Viewing online pornography negatively affects their brains for decades; it affects mental health and relationships - sometimes for their entire life.



# Phones & online safety

**Child Grooming** - befriending and establishing an emotional connection with a minor under the age of consent to lower the child's inhibitions with the objective of sexual abuse.

Child grooming is also used to lure minors into various illicit businesses such as child trafficking, child prostitution, cybersex trafficking, or the production of child pornography

**Sextortion** - situations where young people are asked to send nude photos of themselves to predators and are then extorted for favors or money.

1 in 4 victims of sextortion are younger than 13 years old, and 2 in 3 victims are girls threatened before 16 years old





# Phones & online safety



***“Their phone in their back pocket,  
given to them by their parents, is the  
most dangerous weapon in the hands  
of our children.”***

*John Van Arnam, The Third Talk, Inc. / NC Center for Safer Schools*

# VAPING

The health risks of vaping include:

- **addiction:** E-cigarettes contain nicotine, a drug that's highly addictive. You don't have to vape every day to get addicted.
- **anxiety and depression:** Nicotine makes anxiety and depression worse. It also affects memory, concentration, self-control, and attention, especially in developing brains.
- **becoming a smoker:** Young people who vape are more likely to start smoking regular (tobacco) cigarettes and may be more likely to develop other addictions in the future.
- **impotence:** There is some evidence that vaping can cause sexual dysfunction in men.
- **sleep problems**
- **exposure to cancer-causing chemicals**
- **chronic bronchitis**
- **lung damage** that can be life-threatening

From KidsHealth: <https://kidshealth.org/en/parents/e-cigarettes.html>



# VAPING

- 8.1% (2.25 million) of all students reported current use of tobacco products
  - 10.1% (1.58 million) of high school students reported current use of tobacco products
  - 5.4% (640,000) of middle school students reported current use of tobacco products



**Vapes and nicotine pouches (“tobacco products” of any kind) are not allowed on school grounds.**

1.8% of students (480,000) reported current use of nicotine pouches



# TRANSITION

TextStudio

**April 16 - Career Fair**

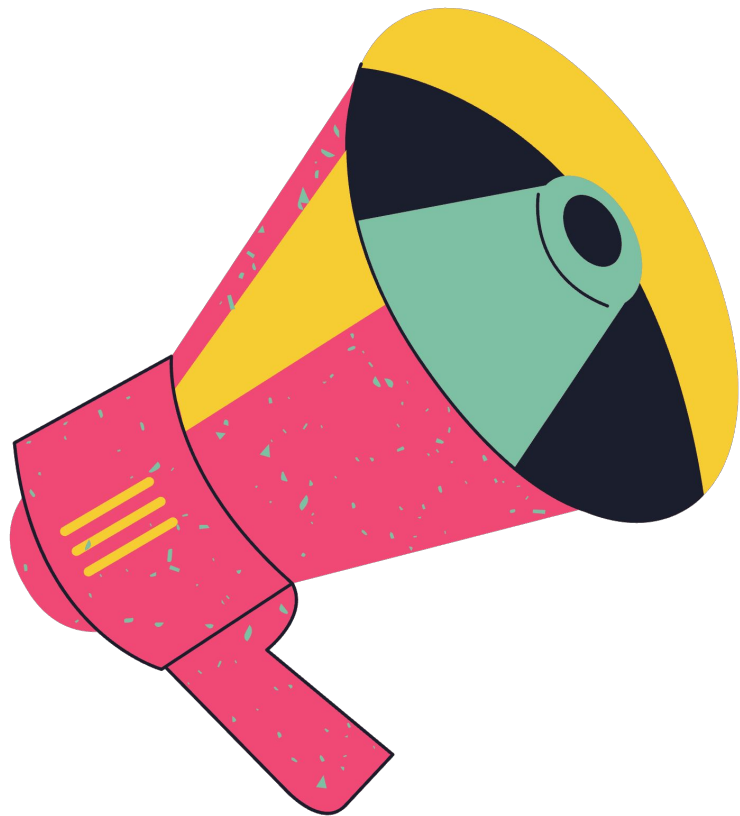
**May 2 - Meet in the Middle**

**August 9 - Ashe Blast**

**TBD - Open House**

Any  
questions?





**We want your feedback**

